

## PRODUCT DATASHEET

### AGL Primary Connector Kits KD500 & KD510



FAA AC 5345-47, L-823 Styles 3 and 10, Class B

**KD500 for screened cable**



**KD510 for unscreened cable**



KD500 & KD510 are designed for a fast-and-easy watertight connection between the primary cable and the series isolating transformer. The connectors allow a rather fast mounting and assembly on site.

Primary connector designs have been the industry standard for over 30 years. KD500 & KD510 are FAA certified and fit to a wide range of cable sizes. KD primary connectors are packed and delivered in kits including all the necessary parts for making the assembly on primary cables. Each primary connector kit contains components for a pair (a plug and a receptacle). These silicon filled connectors fast to install and insulated screen continuity is available as an option.

- Available for screened cables (KD500) and unscreened cables (KD510)
- Fast to install 5-10 min
- FAA certified
- Nominal rating: 25 A and 5000 V
- Superior isolation resistance by thermoplastic elastomer (TPE)
- Cable diameter 10,0 - 22,0 mm (0.393 - 0.866 inches)
- Conductor size 6 - 10 mm<sup>2</sup> (8 - 6 AWG)
- ROHS compliance with EU directive NO2002/95/EC

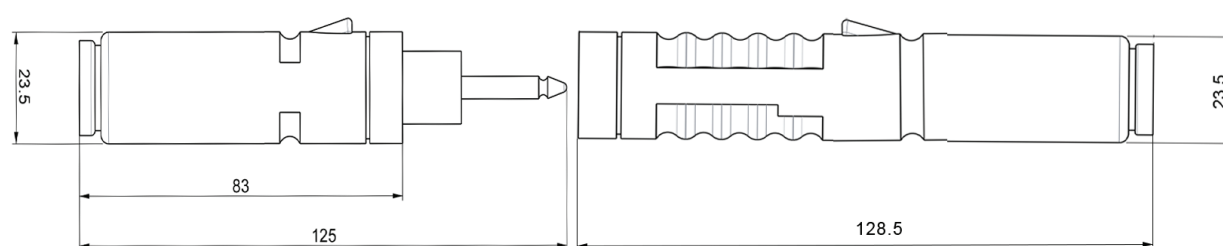


## Technical data

EFLA Type	Conductor size [mm <sup>2</sup> ]	AWG	Cable diameter [mm, inch]	Diameter at wire insulation [mm, inch]	Diameter/Length of assembly [mm, inch]
KD500	6	8**	10.0 – 14.5 mm, 0.393 – 0.570"	7.0 – 10.5 mm, 0.275 – 0.413"	23.5/222 mm, 0.925/8.74"
KD500.1	6	8**	14.0 – 18.5 mm, 0.551 – 0.728"	10.0 – 13.5 mm, 0.393 – 0.531"	23.5/222 mm, 0.925/8.74"
KD500.6	6	8**	8.5 – 11.5 mm, 0.334 – 0.452"	12.5 – 16.0 mm 0.492 – 0.629"	23.5/222 mm, 0.925/8.74"
KD500.2	10*	6	14.0 – 18.5 mm, 0.551 – 0.728"	12.5 – 16.0 mm 0.492 – 0.629"	23.5/222 mm, 0.925/8.74"
KD500.5	10*	6	10.0 – 14.5 mm, 0.393 – 0.570"	7.0 – 10.5 mm, 0.275 – 0.413"	23.5/222 mm, 0.925/8.74"
KD510	6	8**	10.0 – 14.5 mm, 0.393 – 0.570"	7.0 – 10.5 mm, 0.275 – 0.413"	23.5/222 mm, 0.925/8.74"
KD510.1	6	8**	14.0 – 18.5 mm, 0.551 – 0.728"	10.0 – 13.5 mm, 0.393 – 0.531"	23.5/222 mm, 0.925/8.74"
KD510.6	6	8**	8.5 – 11.5 mm, 0.334 – 0.452"	12.5 – 16.0 mm 0.492 – 0.629"	23.5/222 mm, 0.925/8.74"
KD510.2	10*	6	14.0 – 18.5 mm, 0.551 – 0.728"	12.5 – 16.0 mm 0.492 – 0.629"	23.5/222 mm, 0.925/8.74"
KD510.5	10*	6	10.0 – 14.5 mm, 0.393 – 0.570"	7.0 – 10.5 mm, 0.275 – 0.413"	23.5/222 mm, 0.925/8.74"

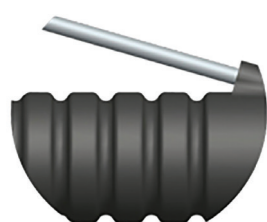
\*16 mm<sup>2</sup> stranded, \*\*up to 19 strands

## Outline dimensions

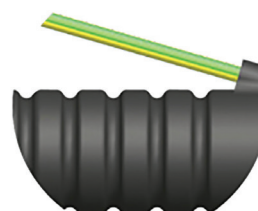


## Screen continuity - KD500

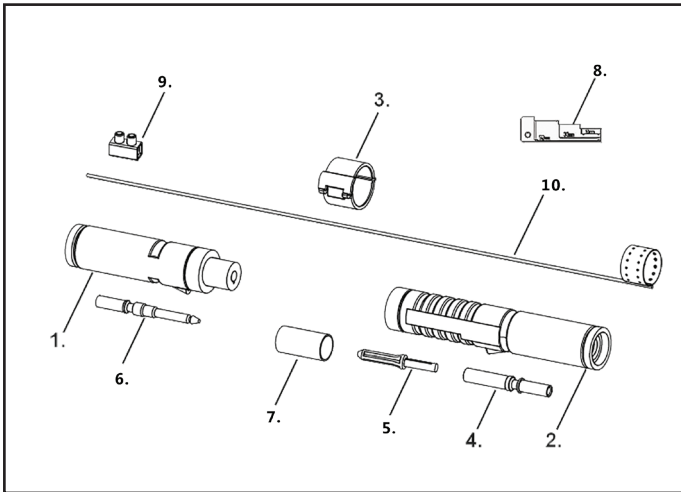
The standard screen continuity for KD500 is a 300 mm long, 2.5 mm<sup>2</sup> tinned copper wire. Optionally, can be supplied with insulated screen continuity in yellow-green (EFLA Type: KD500.X/YG).



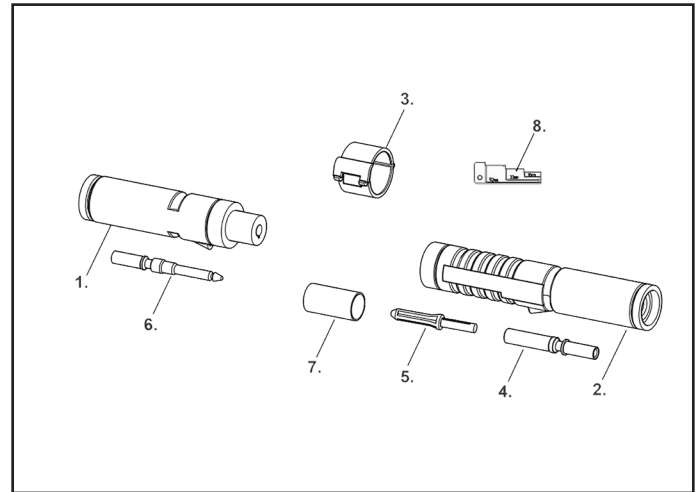
KD500



KD500/YG



KD500



KD510

## Content:

Silicon grease, installation instructions, paper towel and the components labeled in these figures above.

- |  |  |
|--|--|
| <ol style="list-style-type: none"> <li>1. Plug elastomer housing (male)</li> <li>2. Receptacle elastomer housing (female)</li> <li>3. Locking device</li> <li>4. Socket</li> <li>5. Guiding pin (plastic)</li> </ol> | <ol style="list-style-type: none"> <li>6. Metal pin</li> <li>7. Screen conducting wire and ring (x2)</li> <li>8. Screw type connector (6mm<sup>2</sup>)</li> <li>9. Measure/Gauge</li> <li>10. Measure to strip cable</li> </ol> |
|--|--|

## Suggested manual crimping tools

EFLA recommends these following tools:

### Manual crimping tools:

- Elpress EWB 4099C
- KLAUKE K05/6
- KLAUKE K24
- KLAUKE K18

### Electrical crimping tool:

- Elpress PVL 130S - WB4099

